

# No Car, No Problem!

## Burlington-Winooski Travel Guide



CarShare **Vermont**



## Welcome

We all need to get around, and how easy (or not) that is to accomplish can greatly impact our quality of life. This guide is here to make it easier to get around without a personal car. There is no one-size-fits-all approach, but in the coming pages we'll do our best to provide some examples to help you rethink how you travel from here to there, whether on foot, by wheelchair, bike, or bus, or with CarShare Vermont.

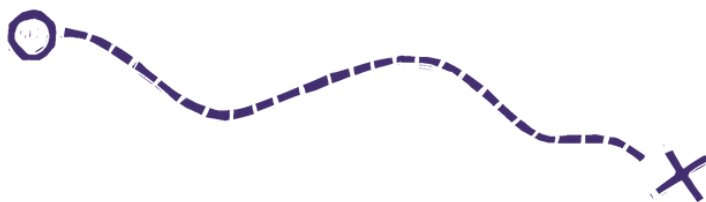




# Contents



Where To Today? .....	5
• Running errands .....	6
• Getting to work .....	7
• Getting to appointments .....	8
Pick Your Mode .....	9
• Walk/roll.....	10
• Bicycle .....	10
• Bus .....	11
• CarShare .....	11
• Carpool .....	12
• On-demand .....	12
• Long-distance travel .....	13
• Personal motor vehicle .....	13
Do the Math .....	14
Resources .....	15

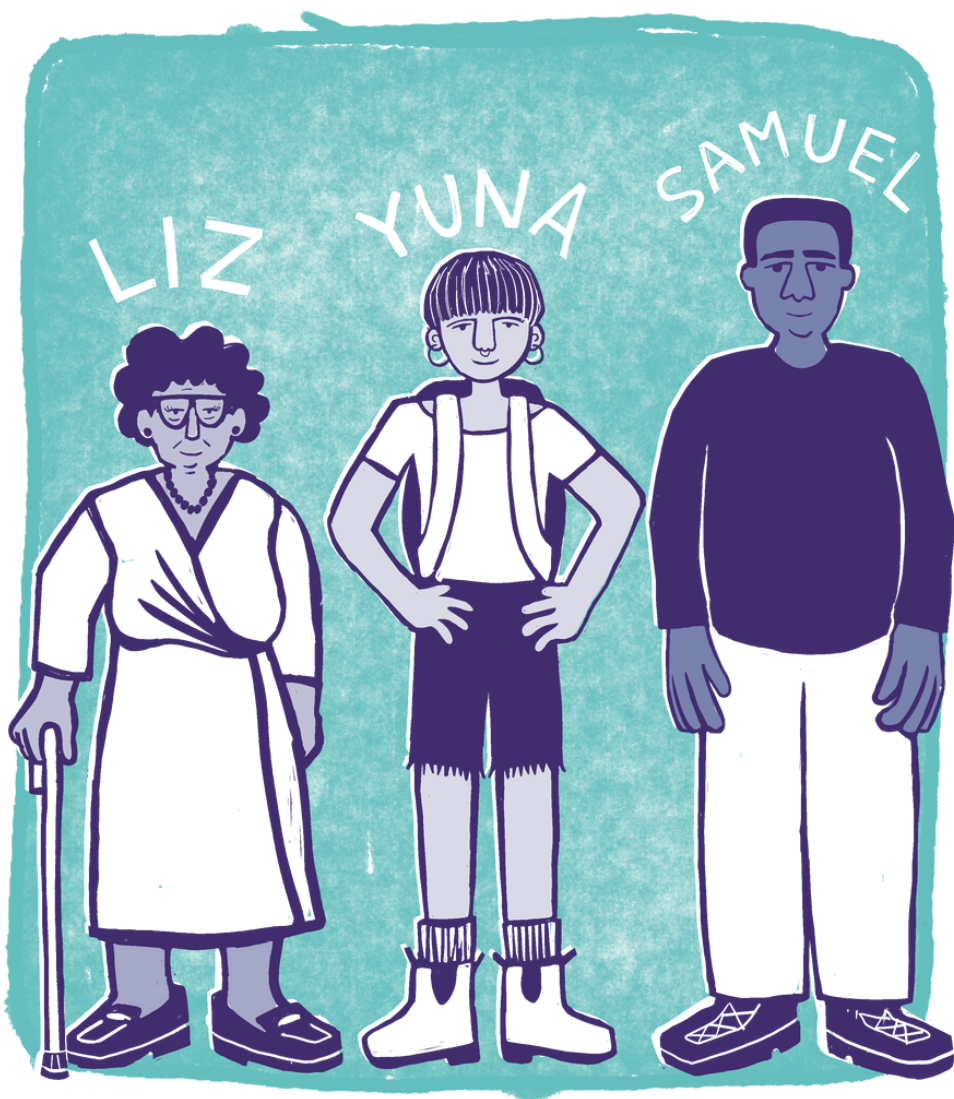


**carsharevt.org**



## Where to Today?

Meet Liz, Yuna, and Samuel, three car-free CarShare Vermont members. Follow along as they get where they need to go by combining transportation options with ease.

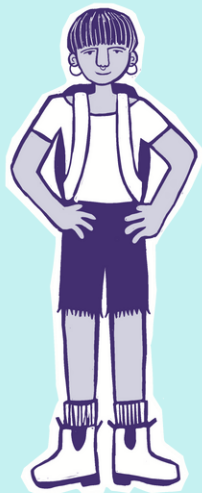




## Running Errands

Liz donated her car to **Good New Garage**. She's saving hundreds of dollars each month and has a **CarShare Vermont car** right down the block from her apartment. It's way nicer than her old one! She likes to combine errands to save time and money. Her **Walk to Shop trolley** is the secret ingredient that makes it all work.

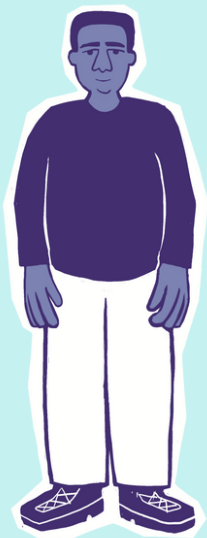




## Getting to Work

Yuna landed her dream internship in Essex this summer. Her commute is a 5-minute **bike ride** to the Downtown Transit Center where she puts her bike on the **GMT #2 Essex bus** and then pedals the last mile to her job site. She enjoys listening to music, and catching up with friends while someone else drives.





## Getting to Appointments

Samuel **bikes** his e-bike up the hill to his job at the medical center every day. Today, his wife took the family van out of town and his son has a dentist appointment across town. He reserved a **CarShare Vermont car** parked around the corner in advance, and they drive across town with time to spare!



## Pick Your Mode

Whether you need to walk, bike, bus, roll, or drive to your destination, our community has many resources that can help. Pick a nice day and try something new. Have questions? Find contact information for dozens of transportation providers and related programs at the end of this guide.





## Walk/roll

We're fortunate to live in a place with many stores, parks, employers, and neighbors located close together, making walking or rolling a cheap, convenient way to get around. A hand cart—such as a trolley from **Walk to Shop**—can ease the burden of groceries or laundry. Traveling a few blocks under your own power and at your own pace can improve a bad mood and connect you to those you meet. Chances are there's a bus stop or a shared bike or car close by if you need to go farther. In winter, Burlington's and Winooski's sidewalk plows are community treasures.



## Bicycle

A simple bike in good working order can open up new possibilities. Local shops like **Old Spokes Home** and **Betty's Bikes** can provide an affordable bike, and **Local Motion** can help with everything from maps to safety tips. Bikes are easy to park at your destination and welcome on **GMT** buses. If hills, sweat, and distance have you worried, an electric-assist bike could be the answer. They're easier to access than ever, with consultations from **VBike**, rebates from the state and local utility companies, and low-interest **loans** from local credit unions. A good e-bike may even help you leave your car behind. One turn of the pedals often leads to another.



## Bus

**Green Mountain Transit (GMT)** provides bus service to Chittenden County and beyond. You only have to pay for your first two trips of each day, and your total fares for the month are also capped. Be sure to install their two mobile apps: *Transit*, for trip planning and service updates, and *Ride Ready by GMT*, for fare payment. Kids under 6 ride for free—as do bicycles. Their Ride Together program can help you get started.



## CarShare

You don't have to own a car to drive one. **CarShare Vermont** has vehicles all over Burlington and Winooski available to borrow by the hour or day. National services like **Turo** let you rent a car from a neighbor. **AARP Vermont** offers courses if you want to refresh your driving skills before hitting the road.



## Carpool

Carpooling or vanpooling is a great way to save money, reduce wear and tear on your vehicle, and meet new people. Sharing a ride with one other person can cut commuting costs by up to 50%!

**CATMA** can help match you with other commuters, and **Go! Vermont** can even provide a van.



## On-demand

Sometimes you need on-demand service to get you to your destination. **Ride-hailing apps** like Lyft and Uber are convenient but can be expensive. If you want to keep it local, the BTV Airport website lists over 30 **taxi companies** operating in the Burlington area. For those with special mobility needs, **SSTA** can pick you and bring you where you need to go. You may be eligible for rides from **Good News Garage's** Ready to Go program.



## Long-distance travel

When you need to get out of town, you still have a lot of great options. **Amtrak** has two routes from our area. Bus lines can take you to Montreal, Albany, Boston, and beyond. **CarShare Vermont** vehicles can travel anywhere in the US and Canada for up to 10 days. Planes, ferries, and rental vehicles are all close at hand.



## Personal motor vehicle

Still need your own car? Programs like **Good News Garage's** Wheels to Work may be able to help. **Drive Electric Vermont** can point you to rebates and low-interest loans for electric vehicles.



## Do the Math!



Do you know what it costs to get around? Tracking your spending will help you create a more accurate and informed transportation budget.

### Take a moment to answer the following questions:

- What are the five most common trips you take?
- What is the total distance and time it takes to complete each trip?
- What time of day do you usually go?
- Do the trips typically occur on weekdays or weekends?
- What is the cost per trip?
- How often do you make this trip each week/month/year?
- Is there an alternative way to get there? What is the cost per trip?
- What are your total transportation expenses per month for all trips using your current mode(s)?
- What would your total expenses be if you swapped in alternative mode(s)?

## Ways to Save

**Own your own car?** Calculate its true cost at [carsharevt.org/cost](http://carsharevt.org/cost).

# Resources

## AARP Vermont •

[states.aarp.org/vermont](https://states.aarp.org/vermont) | 866-227-7451

Offers Smart Driver™ courses in person and online

## Amtrak •

[amtrak.com](https://amtrak.com) | 800-USA-RAIL

Passenger train service. The Ethan Allen Express route connects Burlington to Vergennes, Middlebury, Rutland, Castleton, Fair Haven, Albany, NY, and New York City. The Vermonter route connects Essex Junction to Saint Albans, Waterbury, Montpelier, Randolph, White River Junction, Windsor, Brattleboro, Claremont, NH, western MA, CT, and NYC. Both stations are accessible by GMT bus. Bring your bike by reserving a spot and paying a modest fee.

## Betty's Bikes •

[bettysbikes.org](https://bettysbikes.org) | 802-32-BETTY

Used bikes for sale, long and short-term rentals, and bike repair

## BED (Burlington Electric Department) •

[burlingtonelectric.com](https://burlingtonelectric.com) | 802-865-7300

Offers rebates on electric bikes and electric cars

## **Bicycle Benefits** •

[bicyclebenefits.org](http://bicyclebenefits.org)

Discounts at local businesses when you bike

## **BTV** (Leahy Burlington International Airport) •

[btv.aero](http://btv.aero) | 802-863-2874

Five airlines offer flights to over a dozen destinations. Three miles from downtown Burlington and accessible by GMT bus and Bird bikeshare.

## **CarShare Vermont** •

[carsharevt.org](http://carsharevt.org) | 802-861-2340

A membership-based organization that provides a network of vehicles in Burlington and Winooski available to rent by the hour or day. Pick up and drop off at designated neighborhood-based locations. Free memberships for income-eligible households.

## **CATMA** (Chittenden Area Transportation Management Association) •

[catmavt.org](http://catmavt.org) | 802-881-0283

Information and incentives for commuters

## **Drive Electric Vermont** •

[driveelectricvt.com](http://driveelectricvt.com) | 888-921-5990

Information on electric vehicles and incentives

**GMP** (Green Mountain Power) • 

[greenmountainpower.com](http://greenmountainpower.com) | 888-835-4672

Electric utility serving much of Vermont outside the City of Burlington. Rebates on electric cars, motorcycles, and bikes.

**GMT** (Green Mountain Transit) • 

[ridegmt.com](http://ridegmt.com) | 802-864-2282

Local and regional bus service. Track buses in real time with the *Transit* app. Pay fares and save money by using the *Ride Ready by GMT* app. ADA paratransit can connect eligible riders to bus routes. New to riding the bus? The Ride Together program can pair you with a volunteer guide.

**Good News Garage** • 

[goodnewsgarage.org](http://goodnewsgarage.org) | 802-864-3667

An organization that puts donated vehicles to work by getting them to people who need them through its Wheels to Work program and providing rides through its Ready To Go program.

**Google Maps**

[maps.google.com](http://maps.google.com)

Navigation tool that makes it easy to compare and combine modes of transportation

**Go! Vermont** • 

[connectingcommuters.org](http://connectingcommuters.org) | 800-685-RIDE

State website for commuters. Check out their Trip Planner, Commuter Co-op vanpools, and Guaranteed Ride Home reimbursement program.

## **Greyhound •**



greyhound.com | 800-231-2222

Long-distance coach buses connecting Burlington to Montreal, Boston, and beyond.

## **JUMP (Joint Urban Ministry Project)**

jumpvt.org | 802-862-4501

Drop-In Center in downtown Burlington provides direct assistance and other resources to those in need. Stop by 38 South Winooski Ave. on Thursday and Friday mornings at 9 AM.

## **Lake Champlain Ferries •**



ferries.com | 802-864-9804

Ferry service from Grand Isle to Plattsburgh, NY, and from Charlotte to Essex, NY, for pedestrians, bicyclists, and cars. Save with a Commuter Card.

## **Loans •**



Several local credit unions offer low-interest loans for bicycles, e-bikes, and efficient cars. These include Opportunities CU, Vermont Federal CU, and VSECU.

## **Local Motion •**



localmotion.org | 802-861-2700

Bike rentals, Colchester causeway bike ferry, and safe-riding workshops and videos

### **Old Spokes Home •**



[oldspokeshome.com](http://oldspokeshome.com) | 802-863-4475

Used and new bikes for sale, repairs, skill-building workshops, and fun events. Ask about Everybody Bikes and Bike Bonanzas.

### **Reach Up**

[dcf.vermont.gov/benefits/reachup](http://dcf.vermont.gov/benefits/reachup) | 800-479-6151

The Vermont Department for Children and Families provides access to transportation and other resources for families in need.

### **Rental cars •**



[btv.aero/at-btv/ground-transportation/rental-cars](http://btv.aero/at-btv/ground-transportation/rental-cars)

Seven national rental car brands serve the Burlington airport. Two of these have additional locations on Shelburne Road in South Burlington.

### **Ridehailing apps •**



Lyft and Uber serve our area.

### **SSTA (Special Services Transportation Agency) •**

[sstarides.org](http://sstarides.org) | 802-878-1527

Provides accessible transportation to people in Chittenden County who have specialized mobility needs

## **Taxis •**

[btv.aero/at-btv/ground-transportation/taxis](http://btv.aero/at-btv/ground-transportation/taxis)

Over 30 independent cab companies serve our area.

## **Turo**

[turo.com](http://turo.com)

Peer-to-peer carsharing platform allowing you to rent a neighbor's car on a short-term basis

## **VBike •**

[vbikesolutions.org](http://vbikesolutions.org)

Nonprofit organization working to get more Vermonters on electric bikes. Free consultations.

## **Vermont Translines •**

[vttranslines.com](http://vttranslines.com)

Coach bus service connecting Burlington to Albany, NY, via the Route 7 corridor

## **VPOP (Vermonters for People-Oriented Places)**

[verpop.org](http://verpop.org)

Advocacy and discussion group working toward dense, connected, and affordable cities and towns

## **Walk to Shop •**

[netzerovt.org/walk-to-shop](http://netzerovt.org/walk-to-shop)

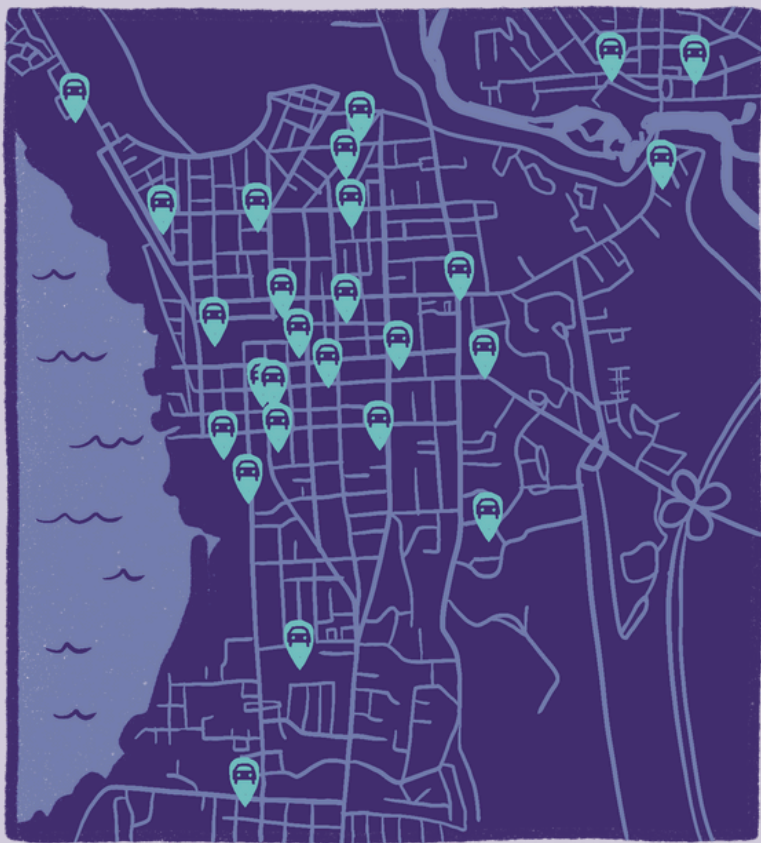
Rolling trolleys to make walking more practical for more people. Discounts available.

## **Wanderu •**

[wanderu.com](http://wanderu.com)

Tool to plan long-distance trips by bus and train

# FIND A CAR NEAR YOU!



Illustrations by Christine Tyler Hill | Tender Warrior Co.

## [carsharevt.org](http://carsharevt.org)